

VR725

ADVANCED TECHNOLOGY LOGGING
AND ARCHIVING SYSTEM

Eventide®

ONE ALSAN WAY
LITTLE FERRY, NJ 07643, USA
TEL: 201.641.1200
FAX: 201.641.1640
E-MAIL: LOGGERS@EVENTIDE.COM
WEB: WWW.EVENTIDE.COM



MISSION-CRITICAL RELIABILITY, MISSION-ENHANCING HARD- WARE AND SOFTWARE

Eventide invented the digital logger in 1989. Our new VR725 re-invents the logger, using the open Linux operating system for expandability and versatility that neither proprietary nor Windows-based systems can match! Eventide has earned a reputation for the highest degree of fault-tolerance and the easiest to use loggers in the industry. By combining the best attributes of our purpose-built hardware with the flexibility of the Linux operating system we have created the best of both worlds --- in an economical package!

CONTROL FROM THE FRONT PANEL, ACCESS FROM THE NET- WORK & VICE VERSA!

Control the VR725 logger from the front panel using the optional 7" touch screen color TFT display, or simply plug in a monitor, a keyboard and a mouse. Monitor and play back right at the logger! Multiple users can also simultaneously recall, monitor, and play back at any Windows 2000, NT or XP networked workstation.

LINUX OPERATING SYSTEM IS FASTER, MORE RELIABLE, AND COST EFFECTIVE

Because we use Linux, there are no licensing fees to pay, and reliability is dramatically improved with this leaner and more efficient operating system.

SCALABILITY AND FLEXIBILITY ARE ENGINEERED-IN

We know that your needs can change, so we have designed the VR725 to accommodate a wide variety of interfaces. Analog and digital recording channels are scalable from 8 to 96 channels; Up to 8 T1, E1 or ISDN PRI circuits are accommodated. What's more, you can mix analog and digital channels in the same unit. On/Off-hook, VOX, and continuous record activation are all selectable on a per-channel basis, as are beep tones and automatic gain control (AGC). The VR725 also supports DTMF and CLID telephone number detection. Compression rates of 13.3kb/s, 16kb/s, 32kb/s, or 64kb/s are selected for each group of channels. Configuration is programmable - no tricky hardware adjustments necessary!

FAULT TOLERANT STORAGE FOR MONTHS (OR YEARS!)

Fully redundant RAID-1 dual mirrored 250GB hard drives are standard, yielding over 4.7 channel years of recording at 13.3kb/s. A Hot swap RAID-5 option provides 1TB of storage or over 14 channel years of recording. For archiving, a 9.4GB DVD-RAM multi-drive is standard which holds 1540 channel hours of audio with an option for a second drive. It also writes on economical DVD-R media. Dual redundant hot swappable power supplies are standard.

FEATURE-RICH CALL BROWSER WITH NO LICENSING FEES

The Call Browser provides access from an unlimited number of standard PC workstations running Windows 2000, NT or XP, and up to 16 workstations can browse the VR725 simultaneously. Multiple VR725s can be operational on a single network without interfering with your existing network or servers. Our Call Browser is a self-installing and self-contained application that requires minimal system resources from your workstation, yet provides full access to the Call Record Database.

COMPREHENSIVE USER FEATURES

All call records are stored in a state-of-the-art relational database. Our Call Browser search features include filtering by Channel Name, Time/Date, Duration, Dialed Number, ANI, DTMF, Caller ID, Call Direction or Call Tag. Up to 8 channels of Playback or Live Monitoring are available simultaneously. You can create PC-compatible WAV files of single calls or all calls that comprise an incident.

MULTIPLE USER ID/PASSWORD SECURITY

The system administrator can create multiple user profiles to allow permissions to be managed down to the channel level using user ID and password security.

CHOOSE EVENTIDE

For over 30 years Eventide has built a reputation for technological innovation and reliability. Thousands of customers worldwide have come to depend on Eventide for mission-critical applications such as emergency call centers, and air traffic control communications centers. For more information about the VR725, call Eventide at 201-641-1200 or visit www.eventide.com.

KEY FEATURES

LINUX OS RUNNING FROM NON-VOLATILE MEMORY PROVIDES FASTER, MORE RELIABLE AND MORE COST-EFFECTIVE SYSTEM

STAND-ALONE DIGITAL LOGGER WITH OPTIONAL 7" COLOR TFT TOUCH SCREEN CONTROLLER FRONT PANEL

NETWORK SERVER WITH ACCESS FROM ANY NETWORK WORKSTATION

CALL RECORD DATABASE SERVER

UP TO 16 WORKSTATIONS CAN SIMULTANEOUSLY ACCESS LOGGER

FIELD UPGRADEABLE FROM 8 TO 96 CHANNELS

DUAL 250GB RAID-1 STANDARD, OPTIONAL 1TB HOT-SWAPPABLE RAID-5

MIX ANALOG AND DIGITAL CHANNELS IN SAME SYSTEM

CALL RECORD BROWSER FOR WINDOWS PCS

DESKTOP INSTANT RECALL

LIVE MONITOR OR PLAY UP TO 8 CHANNELS SIMULTANEOUSLY

TAG/SAVE CALLS

FULL-SCALE TIME LINE DISPLAY WITH MULTI-CHANNEL VIEW AND ZOOM CONTROL

SPOKEN TIME/DATE AT PC FOR RE-RECORD

RECORD ON DEMAND

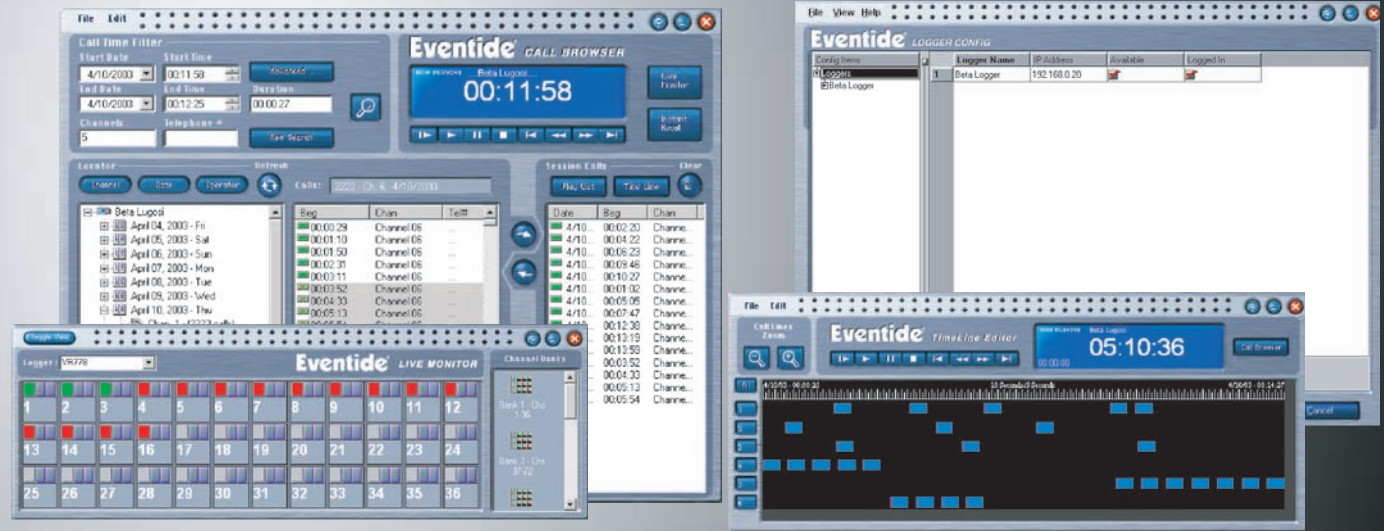
CAN PLAY BACK FROM INTERNAL HARD DRIVE OR ARCHIVE DRIVE DURING NORMAL RECORDING

INPUT CARDS DETECT DTMF AND CLID FOR INCLUSION INTO CALL RECORDS DATABASE

CALL RECORD DATABASE SORTING AND FILTERING OF CALLS BY USER-DEFINED PARAMETERS

ARCHIVE PROTECTION PREVENTS PREVIOUSLY RECORDED MEDIA BEING RECORDED OVER OR FORMATTED

DESKTOP OR RACKMOUNT



SPECIFICATIONS

Optional Front Panel Interface

- 7" Active matrix color TFT touch screen

Standard Front Panel

- 1/8" Line level output jack
- 1/8" Headphone output jack
- Speaker

Standard Local Control

- User-supplied monitor, keyboard, mouse

Remote PC Call Browser

- Eventide call browser software for Windows

Channel Capacity per Unit

- 8 to 96 Analog
- 8 to 96 Digital PBX phone sets
- 1 to 8 Digital T1/E1/ISDN PRI circuits

Channel Capacity per System

- Completely scalable to 100's using multiple loggers

On-line Recording Storage

- Standard dual mirrored 250 GB RAID-1, optional hot swap, 41,250 Channel hours

System Platform

- Non-proprietary PC server

Operating System

- Linux running from non-volatile memory

Archive Recording Storage

- 9.4GB DVD-RAM - 1540 Channel hours

Built In Re-Record Capability

- CD-R in DVD archive drive

Call Record Database

- Relational database of all call records with programmable retention

Playback Search Parameters

- Channel name, time/date, duration, dialed number, incident name
- Caller ID number, ANI, DTMF, call tag, ALI data

Playback

- Live monitor, simultaneous record/play, local speaker, remote PC, continuous, looped

Security

- Multiple user profiles control permissions to the channel level

Channel Inputs

- Compression: 13kb/s GSM, 16kb/s & 32kb/s ADPCM, 64kb/s PCM Mu-law
- Frequency response: 200Hz to 3400Hz
- Signal to noise: -50dB
- Crosstalk: -60dB
- AGC: 24dB boost
- Impedance:>10Kohm
- Record activation: VOX, off-hook, continuous, external

Analog Interfaces

- Analog telephone, 2-way radio, any audio source,
- Beep tone - built in, selectable per channel

Digital Interfaces

- Most digital PBX phone sets
- Digital T1/E1/ISDN PRI

Network

- Ethernet 100Mbps, TCP/IP protocol, control software. Windows-based Browser, up to 16 simultaneous accesses, with desktop Instant Recall

Power

- 90 to 250VAC 47 to 63Hz, Dual hot swap power supplies

Dimensions

- 5.25" H X 19" W X 22" D (3U), Weight 50 pounds

VR725

EVENTIDE IS A REGISTERED TRADEMARK OF EVENTIDE INC. ALL SPECIFICATIONS SUBJECT TO CHANGE WITHOUT NOTICE.
COPYRIGHT © 2004 EVENTIDE INC.

Eventide[®]