



SERIES VR615 w/Optional Front Panel Control

Advanced Technology Logging & Archiving System

Hardware

- Digital Non-Proprietary Platform
- Standalone - Ready for Monitor, Keyboard, Mouse
- Optional Front Panel Control w/Color LCD Display
- Network Server - Multiple Remote PCs Control
- Rack Mount
- Desktop
- Modular For Fast Simple Upgrades
- Internal Hard Disks - Two
- Archive Drives - 1
- O/S - Linux
- USB Connectors Rear/ Serial Data I/O port
- Speaker
- LED Indicators
- USB Connectors Front
- Line Out Jack
- Headphone Jack
- Volume Control

Optional Front Panel

- 320X240 Color TFT LCD Screen
- Soft Keys
- Hard Keys
- Scroll Wheel
- Keypad

Record Channels

- 8 to 48 Analog
- 8 to 48 Digital Sets
- 1 to 4 Digital Telephone T1,E1 or ISDN PRI Circuits

Audio Compression Rates

- 13kb/s
- 16kb/s
- 32kb/s
- 64kb/s

Record Activation Selectable Per Channel

- VOX
- Hook Detect
- Continuous
- External Command

Record Connectivity

- Analog - Telephone, Radio, Microphones Etc.
- Digital Telephone Stations
- Digital T1,E1 or ISDN PRI Circuits

Channel Input Characteristics Analog

Frequency Response	200 to 3400 Hz
Signal to Noise	-50dB
Crosstalk	-60dB
AGC	Settable by channel
AGC Range	24 dB Max Boost
AGC Attack Time	Less than 20 msec.
AGC recovery time	200 msec. typical
Input	10K Ohm, Balanced Bridge, DC Blocked
Input Levels	-40 to +10 dB
Adjustable VOX	Yes
VOX Threshold	0 to -48dB From Full Scale
VOX Holdover	1 to 255 Seconds
VOX Start Time	Less Than 80 msec.
Record Activation Methods	Channel-settable VOX sensing, Voltage sensing, External closure, Continuous

Power Supply

- Heavy Duty High MTBF

Local System Access

- Monitor, Keyboard, Mouse
- Optional Full System Control via Front Panel 320X240 Color LCD GUI w/4 Softkeys,4 Fixed Keys, Numeric Keypad and Cursor/Click Wheel.

Remote System Access

- Unlimited Network Connected Workstations with Eventide VR Series Clients Installed.
 - Up to 16 Simultaneous System Accesses
 - Multi-channel Live Monitor Up to 8 Channels Simultaneously
 - Multi-channel Play w/Talking Time/Date Up to 8 Channels Simult.
 - Drag & Drop, and Email Recordings
 - Call Record Database Queries
 - Multi - System Manager
 - Desktop Instant Recall at Attached PC Workstations
 - Speed Control
 - AGC in Playback

Database

Powerful SQL Relational Database Of All Call Records

Search Parameters

Time/Date - Instant
CID Phone Number
Dialed Phone Number
ANI Phone Number
ALI Data From CAD
Channel Name
Call Tag/Saved
Call Direction/Duration

Integrations

Optional ANI/ALI CAD Interface
Optional Trunk Radio Interface

Reports

Standard Call Detail Report
User Activity Log

Security

User ID/Password to the Channel Level

Remote Diagnostics

Via USB Modem
Via Internet Access

Network Connectivity

Ethernet: 10/100Mbps
Protocol: TCP/IP

Remote Alert & Alarm Notification

Automatic Email Alerts & Alarms

External Time Sync

RS 485/232 Serial Data NENA Format 0,1 or 2
NTP Via Ethernet Connection
IRIG B Optional.

Physical

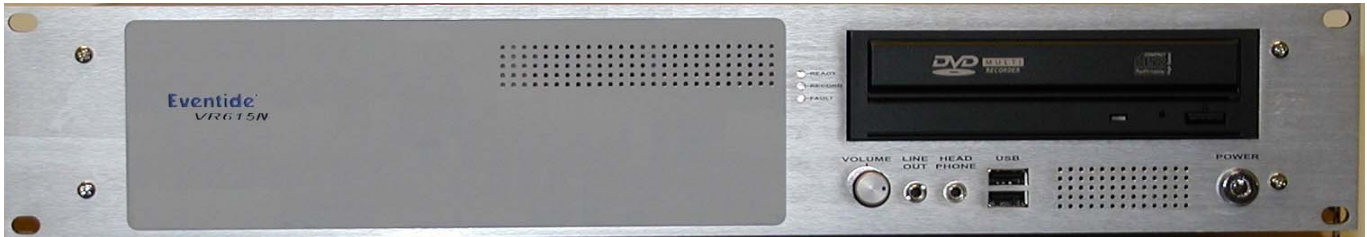
Height: 3.5 Inches (2U)
Width: 19 Inches
Depth: 18.5 Inches
Weight: 35 Pounds

Environmental Factors

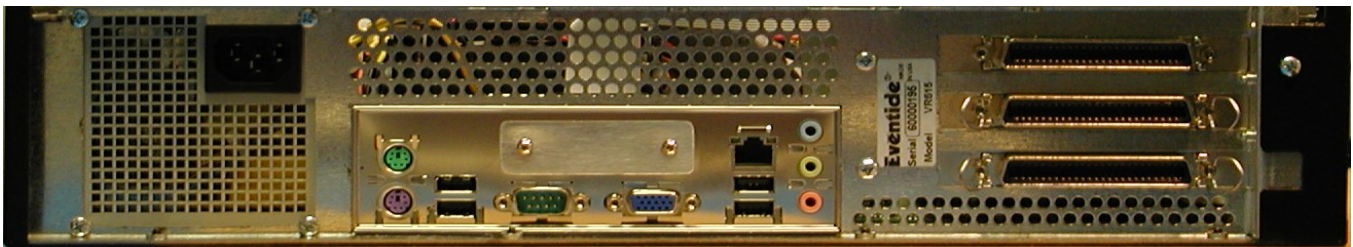
Operating Temperature	0°C to 50°C
Storage Temperature	-30° to 60°C
Humidity	10% to 80% RH Non-Condensing
Storage Humidity	5% to 95% RH Non-Condensing

Power

Input Voltage	100 to 250 VAC
Input Frequency	47 to 63 Hz
Input Power	Typical 150W-Max 300W @ 115 VAC
UPS Power	External Smart Units Optional
Optional Power Supply	40-60 VDC



SERIES VR615 w/Standard Blank Panel Control



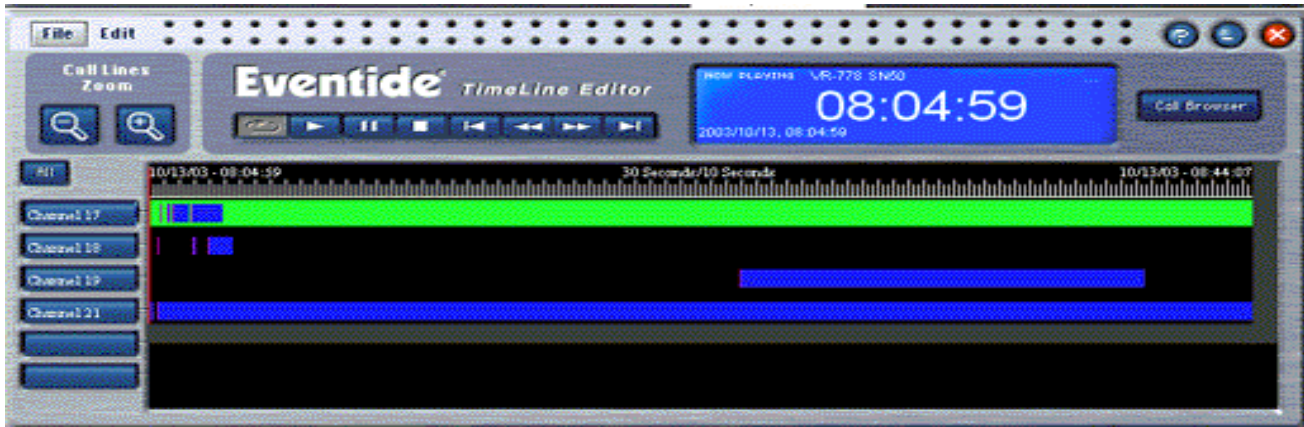
SERIES VR615 Rear Panel

Sample Eventide VR Series Client Call Browser Screens

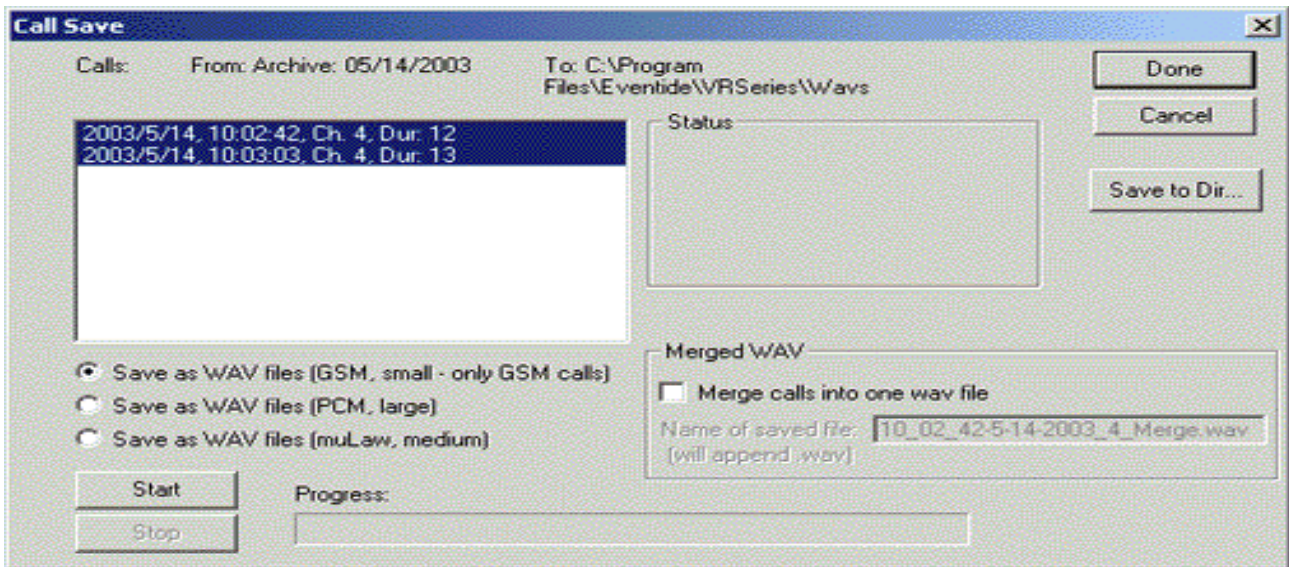
A screenshot of the Eventide CALL BROWSER software interface. The window title is "Eventide CALL BROWSER". It features a "Call Time Filter" section with "Start Date" (10/21/2003) and "Start Time" (00:02:56) fields, and "End Date" (10/21/2003) and "End Time" (00:03:08) fields. A "Channels" field is set to "3". A "Locator" section shows a tree view of channels, with "Channel 03 - (1157 calls)" selected. The main display area shows a list of calls with columns for "Beg", "Dur", "Tel#", "Chan", "Stat", "Incident", and "Date". A large digital display shows "00:02:56".

Beg	Dur	Tel#	Chan	Stat	Incident	Date
00:00:44	00:00:37	...	Channel 03	C		10/21/03
00:01:28	00:00:43	...	Channel 03	C	Fire at 3rd ...	10/21/03
00:02:14	00:00:15	...	Channel 03	C	Fire at 3rd ...	10/21/03
00:02:34	00:00:15	...	Channel 03	C	Fire at 3rd ...	10/21/03
00:02:56	00:00:12	...	Channel 03	C	Fire at 3rd ...	10/21/03
00:05:01	00:00:15	...	Channel 03	C		10/21/03
00:05:21	00:00:06	...	Channel 03	C		10/21/03
00:06:05	00:00:08	...	Channel 03	C		10/21/03
00:06:16	00:00:31	...	Channel 03	C		10/21/03
00:06:49	00:00:40	...	Channel 03	C		10/21/03
00:07:32	00:00:20	...	Channel 03	C		10/21/03
00:07:53	00:00:11	...	Channel 03	C		10/21/03
00:08:24	00:00:10	...	Channel 03	C		10/21/03
00:08:37	00:00:09	...	Channel 03	C		10/21/03
00:08:47	00:00:38	...	Channel 03	C		10/21/03
00:09:32	00:00:37	...	Channel 03	C		10/21/03
00:10:16	00:00:43	...	Channel 03	C		10/21/03
00:11:02	00:00:15	...	Channel 03	C		10/21/03
00:11:22	00:00:15	...	Channel 03	C		10/21/03
00:11:44	00:00:12	...	Channel 03	C		10/21/03
00:13:49	00:00:15	...	Channel 03	C		10/21/03

MAIN CALL BROWSER



TIME LINE EDITOR



MAKE WAVE FILES



LIVE MONITOR